

P : Diploblastic, tissue level organisation, cnidoblasts for offence and defence

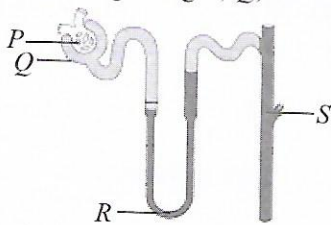
Q : Pseudocoelomates, bilaterally symmetrical, unsegmented

R : Coelomates, respiration by ctenidia, body divisible into head, foot and visceral hump

Now, select the correct option regarding them.

- P* could be *Adamsia* whereas *Q* could be *Ascaris*.
- Q* could be *Enterobius* whereas *R* could be *Palaemon*.
- P* could be *Euplectella* whereas *R* could be *Dugesia*.
- Q* could be *Taenia* whereas *P* could be *Aurelia*.

37. Refer to the given figure of a nephron and select the incorrect option regarding *P*, *Q*, *R* and *S*.



- Blood enters *P* through afferent arteriole and leaves through efferent arteriole.
- Filtrate coming from *P* contains useful materials like glucose, salts etc., which are reabsorbed by blood capillaries surrounding *R*.
- Cuboidal cells lining *R* actively excrete additional wastes from blood into the filtrate.
- Anti-diuretic hormone alters the permeability of *Q* and *S*, thereby increasing reabsorption of water in them.

38. Match column I with column II and select the correct option from the given codes.

Column I		Column II	
(a) Squamous epithelium	(i) Gall bladder		
(b) Columnar epithelium	(ii) Oviduct		
(c) Cuboidal epithelium	(iii) Heart		
(d) Ciliated epithelium	(iv) Thyroid gland		
A. a-(iii), b-(i), c-(iv), d-(ii)			
B. a-(iii), b-(iv), c-(i), d-(ii)			
C. a-(iv), b-(i), c-(iii), d-(ii)			
D. a-(ii), b-(iv), c-(i), d-(iii)			

39. Read the given statements and select the option that correctly identifies true (T) and false (F) ones.

- Hepatitis virus primarily affects the liver.
- Grave's disease occurs due to hyposecretion of thyroid hormones.
- Cheilosis occurs due to deficiency of vitamin B₁.
- Tuberculosis is a bacterial disease whereas anthrax is a viral disease.

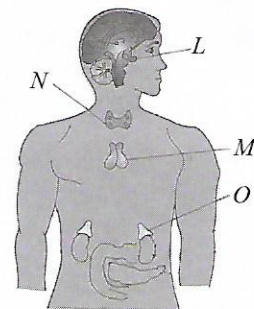
	(i)	(ii)	(iii)	(iv)
A.	T	F	T	F
B.	T	T	F	F
C.	T	F	F	F
D.	T	T	F	T

40. Refer to the given dichotomous key and select the correct option regarding it.

- (a) It is a seedless plant. -Go to II
(b) It is a plant having seeds. -Go to III
- (a) True stem, leaves and roots are absent. - **P**
(b) True stem, leaves and roots are present. - **Q**
- (a) Fruit is not formed and seeds are naked. - **R**
(b) Fruits are formed and seeds are protected. - **S**

	<i>P</i>	<i>Q</i>	<i>R</i>	<i>S</i>
A.	<i>Pteridium</i>	<i>Ephedra</i>	<i>Lycopodium</i>	<i>Acer</i>
B.	<i>Selaginella</i>	<i>Funaria</i>	<i>Cycas</i>	Pea
C.	<i>Marchantia</i>	<i>Pteridium</i>	<i>Oryza</i>	<i>Thuja</i>
D.	<i>Riccia</i>	<i>Azolla</i>	<i>Pinus</i>	<i>Brassica</i>

41. Identify *L-O* in the given figure and select the incorrect option regarding them.

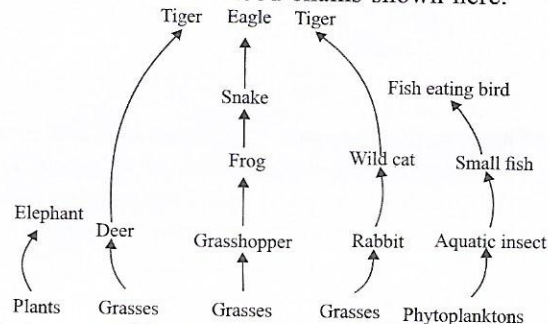


- Hormone secreted by posterior part of *L* stimulates ejection of milk from mammary glands after delivery.
- Hormone secreted by *M* helps to lighten skin colour and regulates working of gonads.
- Hormone secreted by *N* regulates concentration of calcium and phosphorus in the blood.
- Deficiency of a hormone secreted by *O* could cause Addison's disease.

42. Match column I with column II and select the correct option from the given codes.

Column I		Column II	
(a) Montreal Protocol	(i) 1992		
(b) Ganga Action Plan	(ii) 1973		
(c) Chipko Movement	(iii) 1986		
(d) First Earth Summit	(iv) 1987		
A. (a)-(i), (b)-(iii), (c)-(ii), (d)-(iv)			
B. (a)-(i), (b)-(ii), (c)-(iii), (d)-(iv)			
C. (a)-(iv), (b)-(iii), (c)-(ii), (d)-(i)			
D. (a)-(i), (b)-(ii), (c)-(iv), (d)-(iii)			

43. Refer to the different food chains shown here.



How many of these animals belong to the category of secondary consumer?

- 5
- 4
- 3
- 2