



INDIAN SCHOOL AL WADI AL KABIR

CLASS VIII	Department-science	21-06-2020
MARKS:30	PRE MID TERM QP +MS	Duration: 1 hour

General instructions

There are 30 questions. *Each question carries one mark.

All questions are compulsory.

Choose only one answer from the options given.

1.The nucleus and cytoplasm together are known as:

Chloroplast

Protoplasm

Nucleoplasm

Cell membrane

2. Which among the following is made up of cells?

A Brick wall

A Plastic tiffin box

An ant

None of the above

3.Which one of the following is not a part of nucleus?

Chromosomes

Genes

Nucleolus

Vacuole

4.Which of the given materials is used to prepare synthetic fibres like polyester and acrylic?

Petrochemicals

Wood pulp

Coconut fibres

Vegetable peels

5. Which of the following properties of nylon are most convenient for its use?

It is soft, strong and heavy.

It is strong, elastic and light.

It is soft, inexpensive and strong.

It is expensive, soft and light

6. Read the different combinations of terms given below and identify the correct combination of terms with reference to animal cells:

cell wall, cell membrane, nucleus, plastid

cell wall, nucleus, chromosome, mitochondria

cell membrane, mitochondria, vacuole, chromosome

cell membrane, vacuole, mitochondria, chloroplast.

7. You might have observed that dried grapes swell when dipped in plain water and grapes shrink when kept in honey. Which of the following can you conclude based on this observation?

Cell membrane is porous but cell wall is not.

Cell wall is porous but cell membrane is not.

Neither cell membrane nor cell wall is porous.

Both cell wall and cell membrane are porous.

8. Why is plastic coated with melamine?

It becomes a good conductor of heat.

It becomes strong and flexible.

It becomes fire proof plastic.

It can be remoulded.

9. Which of these provide compounds necessary to prepare nylon?

i) Coal
ii) Air

iii) Wood pulp

iv) Water

Only iv

Only i and iii

Only ii and iv

Only i, ii and iv

10. Which of the following is an example for a cross-linked polymer:

Melamine

Polythene

PVC

None of the above

11. **Assertion-** Cell is the basic structural and functional unit of life.

Reason- Body of all the organisms is made up of cells and all the functions of body such as nutrition, respiration, excretion etc. are carried out by the cells

Both A and R are true and R is correct explanation of the assertion.

Both A and R are true but R is not the correct explanation of the assertion.

A is true but R is false.

A is false but R is true

12. **Assertion-** Bacteria is a Prokaryote.

Reason- Bacteria has a well-defined nucleus surrounded by a nuclear membrane.

Both A and R are true and R is correct explanation of the assertion.

Both A and R are true but R is not the correct explanation of the assertion.

A is true but R is false.

A is false but R is true

13. **Assertion-** The nerve cell is long and branched

Reason- To receive and transfer messages, thereby helping to control and coordinate the working of different parts of the body.

Both A and R are true and R is correct explanation of the assertion.

Both A and R are true but R is not the correct explanation of the assertion.

A is true but R is false.

A is false but R is true

14. **Assertion-** Polycot is a blended fabric.

Reason- Polycot is a fabric made by mixing of polythene and cotton.

Both A and R are true and R is correct explanation of the assertion.

Both A and R are true but R is not the correct explanation of the assertion.

A is true but R is false.

A is false but R is true

15. **Assertion-** It is advised not to wear aprons made of synthetic fabrics in kitchen.

Reason- Synthetic fabrics are durable and wrinkle free.

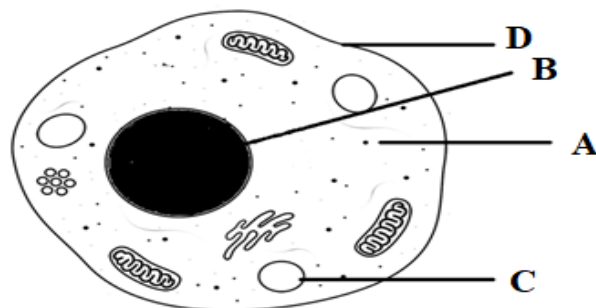
Both A and R are true and R is correct explanation of the assertion.

Both A and R are true but R is not the correct explanation of the assertion.

A is true but R is false.

A is false but R is true

16. Choose the correct option for labelling the given diagram of an animal cell:



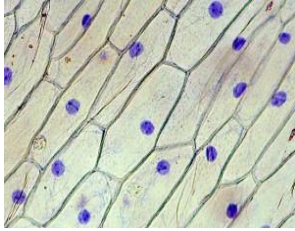
A- Nucleus, B- Cytoplasm, C- cell membrane, D- Vacuole

A- Cytoplasm, B- Nucleus, C- cell membrane, D- Vacuole

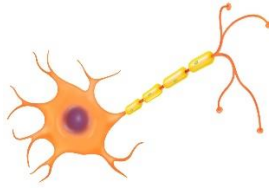
A- Nucleus, B- Cell membrane, C- Cytoplasm, D- Vacuole

A- Cytoplasm, B- Nucleus, C- Vacuole, D- Cell membrane

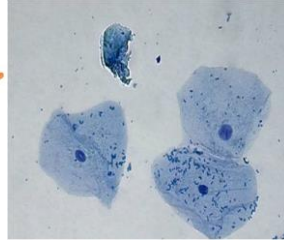
17. Identify the cells given below:



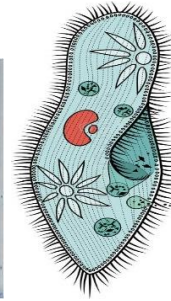
i)



ii)



iii)



iv)

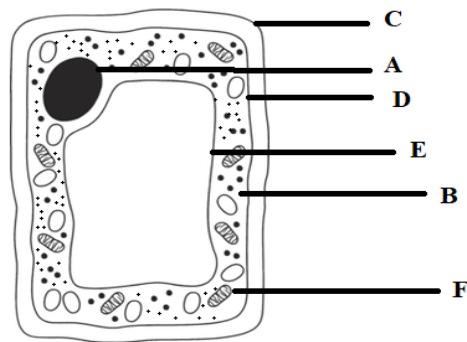
i- Cheek cells, ii- Paramecium, iii- Nerve cell, iv-Onion cell

i- Onion cells, ii- Nerve cell, iii- Cheek cells, iv-Paramecium

i- Cheek cells, ii- Nerve cell, iii- Paramecium, iv-Onion cell

i- Onion cells, ii- Paramecium, iii- Nerve cell, iv-Cheek cell

18. Observe the given diagram of a plant cell and identify the correct statement.



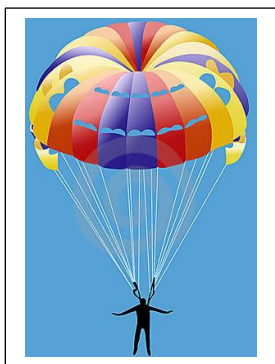
Part E is the control centre of the cell.

Part D is absent in animal cells.

Part C provides rigidity to the plant cells.

Part A is the site of photosynthesis.

19. Identify the polymers which are used to make the given articles:



i) Parachute

ii) Electric switches

iii) nonstick coating in pans

iv) Sweater

i- Teflon, ii- Nylon, iii-Acrylic, iv- Bakelite

i- Nylon, ii- Acrylic, iii -Teflon, iv- Bakelite

i- Nylon, ii- Bakelite, iii- Teflon, iv- Acrylic

i- Acrylic, ii- Teflon, iii -Bakelite, iv- Nylon

20. Observe the given figure and identify the correct option.

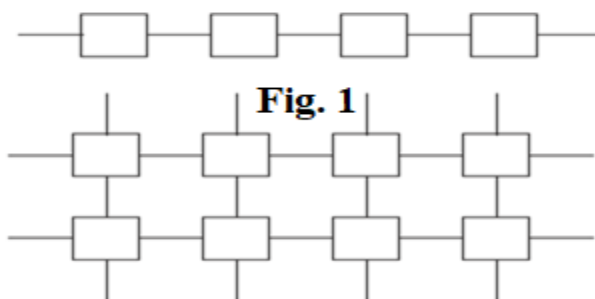


Fig.2

Figure 1 represents a cross-linked polymer.

Figure 2 represents linear polymer.

Arrangement in Figure1 and 2 is formed by the linkage of units called monomers.

Figure 1 type of arrangement is seen in the case of a thermosetting plastic.

Match the columns

Q NO:	A	B
21.	Rose plant	WBC
22.	A cell which can change its shape.	Prepared using wood pulp
23.	PET	Eukaryote
24.	Largest cell	Used for making bottles.
25.	Rayon	Ostrich egg
		Substitute for wool

26. Fruits have a characteristic smell. The chemical responsible for this smell is _____.

Cellulose

Esters

Alcohol

Chlorophyll

27. The _____ is a natural polymer formed by the linkage of glucose units.

Cellulose

Protein

Silk

Oil

28. The table given below has certain terms and three blank spaces named A, B and C. From the options given below choose the correct combination of terms.

Cell	Feature/part	Function
Amoeba	A	Movement
Plant cell	Chloroplast	B
Nerve cell	C	Response and stimulus

A-Pseudopodia, B-Respiration- C- spindle shaped

A-Pseudopodia, B-Photosynthesis, C- Long and branched

A-Vacuole, B-Photosynthesis, C- Spherical

A-Pseudopodia, B- Excretion, C-Long and branched

29. There are two waste drums in Teena's housing colony. One is green and the other is red. Green is for collecting biodegradable waste and red is for collecting non-biodegradable waste. Teena wants to dispose the following things. Please help her to segregate it.



Plastic and wooden toys – red, glass bottle and woollen clothes – green.

Plastic and woollen clothes – red, wooden toys and glass bottle – green.

Plastic and glass bottle – green, wooden toys and woollen clothes – red.

Plastic and glass bottle – red, wooden toys and woollen clothes – green.

30. X has bushy eyebrows and a big nose and his wife has thin eyebrows and a small nose. Their daughter was born with bushy eyebrows and small nose. What do you conclude from this?

Daughter inherited genes only from father.

Daughter inherited genes only from mother.

Daughter inherited genes from both the parents.

Daughter did not inherit any genes from the parents.

MARKING SCHEME

Q NO:	ANSWER	POINTS
1	Protoplasm	1
2	An ant	1
3	Vacuole	1
4	Petrochemicals	1
5	It is strong, elastic and light.	1
6	Cell membrane, mitochondria, vacuole, chromosome	1
7	Both cell wall and cell membrane are porous.	1
8	It becomes fire proof plastic.	1
9	Only i, ii and iv	1
10	Melamine	1
11	Both A and R are true and R is correct explanation of the assertion.	1
12	A is true but R is false.	1
13	Both A and R are true and R is correct explanation of the assertion.	1
14	A is true but R is false	1
15	Both A and R are true and R is not the correct explanation of the assertion.	1
16	A- Cytoplasm, B- Nucleus, C- Vacuole, D- Cell membrane	1
17	i- Onion cells, ii- Nerve cell, iii- Cheek cells, iv-Paramecium	1
18	Part C provides rigidity to the plant cells.	1

19	i- Nylon, ii- Bakelite, iii- Teflon, iv- Acrylic	1
20	Arrangement in Figure1 and 2 is formed by the linkage of units called monomers.	1
21	Rose plant- Eukaryote	1
22	A cell which can change its shape- WBC	1
23	PET – Used for making bottles.	1
24	Largest cell- Ostrich egg	1
25	Rayon- prepared using wood pulp	1
26	Esters	1
27	Cellulose	1
28	A-Pseudopodia, B-Photosynthesis, C- Long and branched	1
29	Plastic and glass bottle – red, wooden toys and woollen clothes – green.	1
30	Daughter inherited genes from both the parents.	1
		TOTAL MARKS-30