



REVISION FOR MIDTERM EXAMINATION
2022 – 2023

NAME:		DATE: .09.2022
CLASS: V SEC: ___ ROLL NO ___	SUBJECT: EVS	TOTAL MARKS: 30 TIME: 2 HOURS

General Instructions:

- This paper consists of **3** sections and **5** pages.
- Marks are indicated against each question.
- All questions are compulsory.

SECTION – A

I. Choose and circle the correct answer. (5 marks)

1. Sign language is used by _____ people.

- a. deaf and dumb b. injured c. blind

2. Which human system controls all the other body systems and the sense organs?

- a. The Circulatory System b. The Nervous System c. The Digestive System

3. Animals that eat both plants and animals are known as _____.

- a. omnivores b. herbivores c. carnivores

4. Which among the following is a non-green plant?

- a. Venus Flytrap b. Pitcher Plant c. Amarbel

5. The growth of a baby plant from a seed is called _____.

- a. Reproduction b. Germination c. Condensation

6. Xanthium seeds are dispersed by _____.

- a. explosion b. wind c. animals

7. The process of watering plants in the field is known as _____.

- a. irrigation b. germination c. transplantation

8. Chemicals used to destroy weeds are called _____.

- a. pesticides b. weeding c. weedicides

9. The seeds sown must be _____.

- a. healthy b. of good quality c. both a and b

10. Farmers put up scarecrows to scare away _____.

- a. farmers b. birds c. children

II. Match the following.

(3 marks)

COLUMN A	COLUMN B
1. spinal cord	a. bulb
2. Insectivorous Plants	b. tractor
3. ginger	c. pongal
4. onion	d. rhizome
5. Harvest Festival	e. bunch of nerves
6. Ploughing	f. Pitcher Plant

1. _____ 2. _____ 3. _____ 4. _____ 5. _____ 6. _____

III. Write the correct version of the given statements.

(4 marks)

1. We get information about our surroundings through our brain.

2. Sensory nerves carry command for suitable action from brain to the muscle.

3. The herbivores are considered as cleaning agents of the environment.

4. Food chains always operate in isolation.

5. Fruits wither and changes into flowers.

6. Hiptage and maple seeds have tufts of hair around them.

7. The supply of water to crops at different intervals of time is called manuring.

8. The process of loosening and turning the soil is called levelling.

IV. Select the correct answer to these questions from the codes (i), (ii), (iii) and (iv) as given below: (4 marks)

- i) Both A and R are true and R is the correct explanation of the assertion.
- ii) Both A and R are true but R is not the correct explanation of the assertion.
- iii) A is true but R is false.
- iv) A is false but R is true.

1. Assertion: The brain is like a master computer.

Reason: It controls and coordinates all our actions and stores a lot of information.

Ans: _____

2. Assertion: Insectivorous plants are green plants.

Reason: Indian pipe and coral root are non-green plants.

Ans: _____

3. Assertion: Ferns produce new plants through roots.

Reason: Rose and sugar cane plants have buds on their stem.

Ans: _____

4. Assertion: The process of separating grains from the harvested crop is known as threshing.

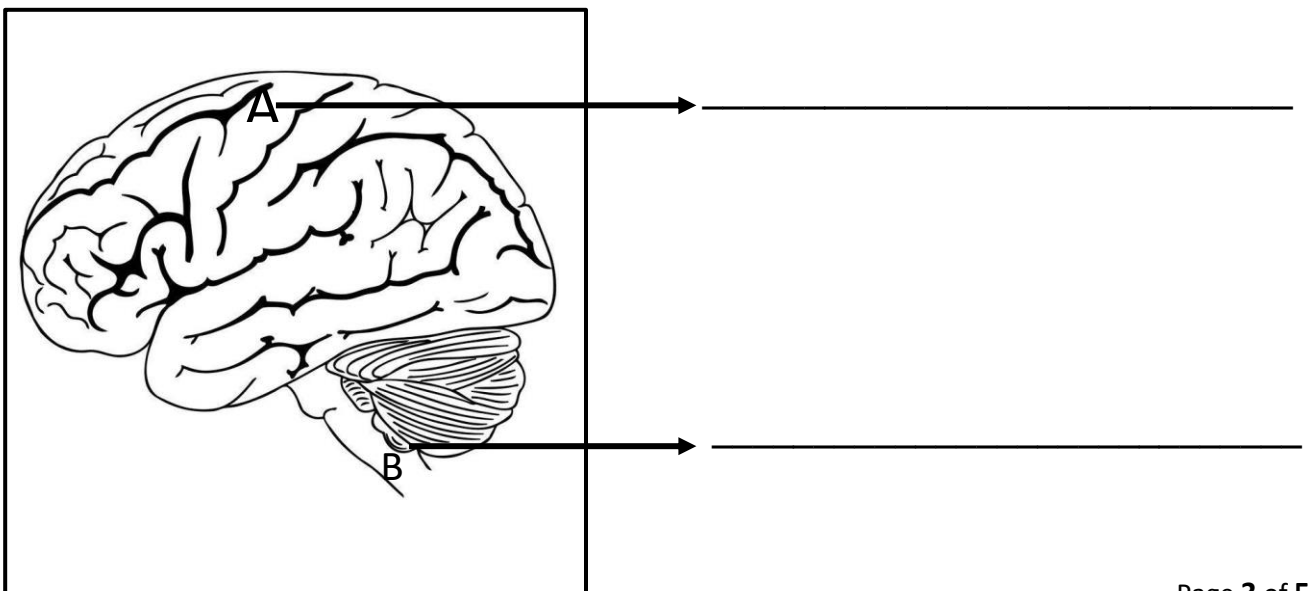
Reason: In large farms, a machine called harvester is used for threshing.

Ans: _____

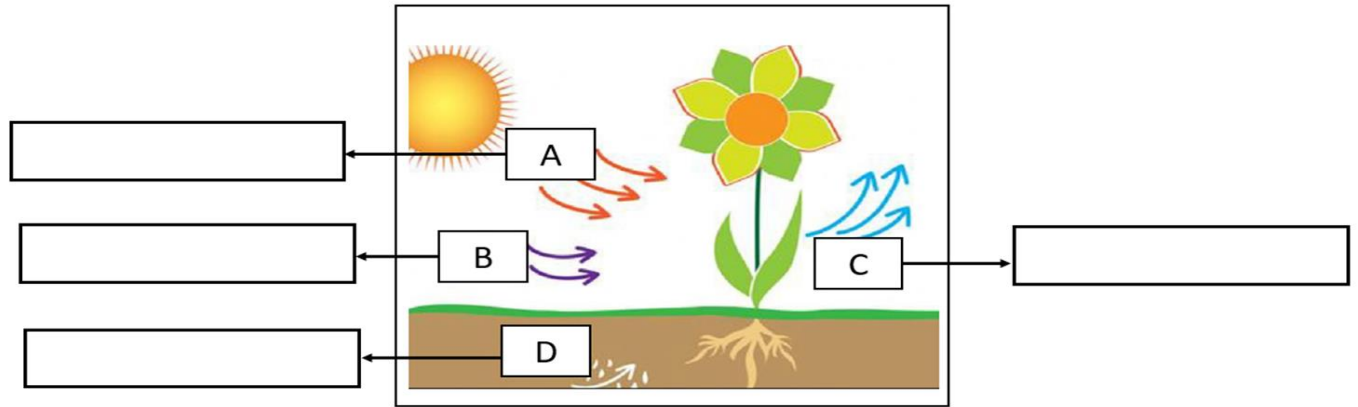
SECTION – B

V. Label the parts indicated in the diagrams given below. (2 marks)

a.

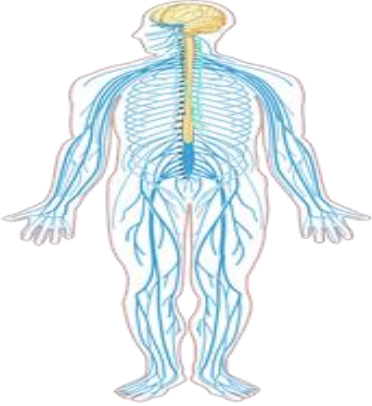


b.

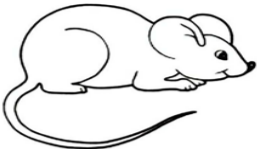


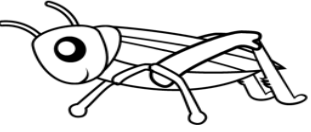


VI. Observe the given pictures and answer the questions that follow. (8 marks)

1.

	<p>The picture given alongside shows the _____ system. It has three main parts. The _____, the _____ and the _____.</p>
--	---

2. a. Sequence the pictures given below in the correct order to form a food chain. (1m)



			
<input type="text"/>	<input type="text"/>	<input type="text"/>	<input type="text"/>

b. What is a food chain?

(1m)

Ans: _____

3.a Identify and name the plant or seed in the picture given below. State the agents of dispersal.

<p>i.  a. _____</p> <p>b. Dispersed by- _____</p>	<p>ii.  a. _____</p> <p>b. Dispersed by- _____</p>
--	--

4.



(i) The farmer in the shown picture is spraying _____ and _____ to protect the crop from harmful insects and pests.

ii. To protect plants from diseases _____ and _____ are sprayed on the standing crops.

SECTION – C

VII. Answer the following questions.

(4 marks)

1. List out the different ways of reproduction in plants. Give an example of a plant that reproduces through spores.

2. What is meant by the Transplantation of seeds?
